

FOR SALE: OFFICE CONDO

1815 W. 13th St., Unit #2, Wilmington DE 19806

Presented by Patterson-Woods & Associates

“The Area’s Leading Commercial Broker”



- **Approx. 1,253± s.f.**
- **Great location just off Pennsylvania Ave.**
- **Restricted to professional use.**
- **Ample parking.**
- **Unit on 2nd floor--elevator accessible.**
- **Taxes: \$1,827/year.**
- **Condo Fee: \$355.25/month.**



3801 Kennett Pike D-100
Greenville Center
Wilmington, Delaware 19807
302-622-3500 800-220-2738
Web Site: www.pattersonwoods.com

Please contact:

Phil Hoge 302-622-3506 hoge@pattersonwoods.com

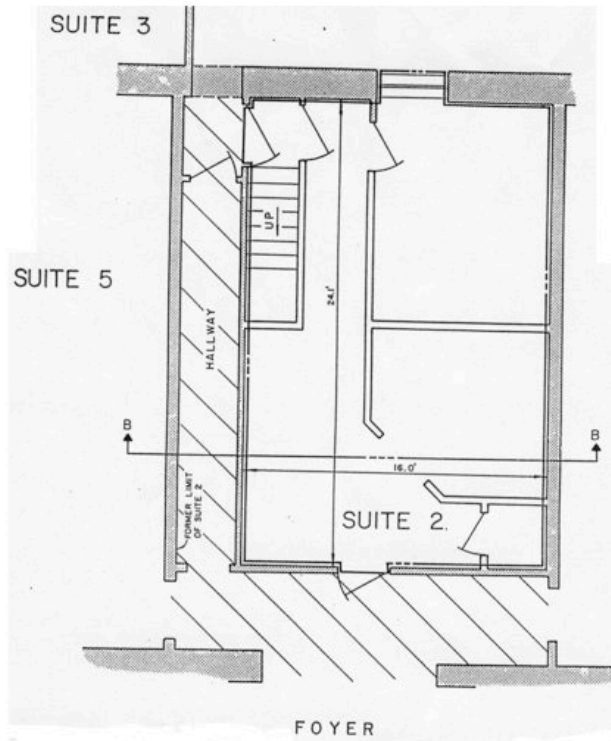
Greg Ellis 302-622-3534 ellis@pattersonwoods.com

CORFAC
International

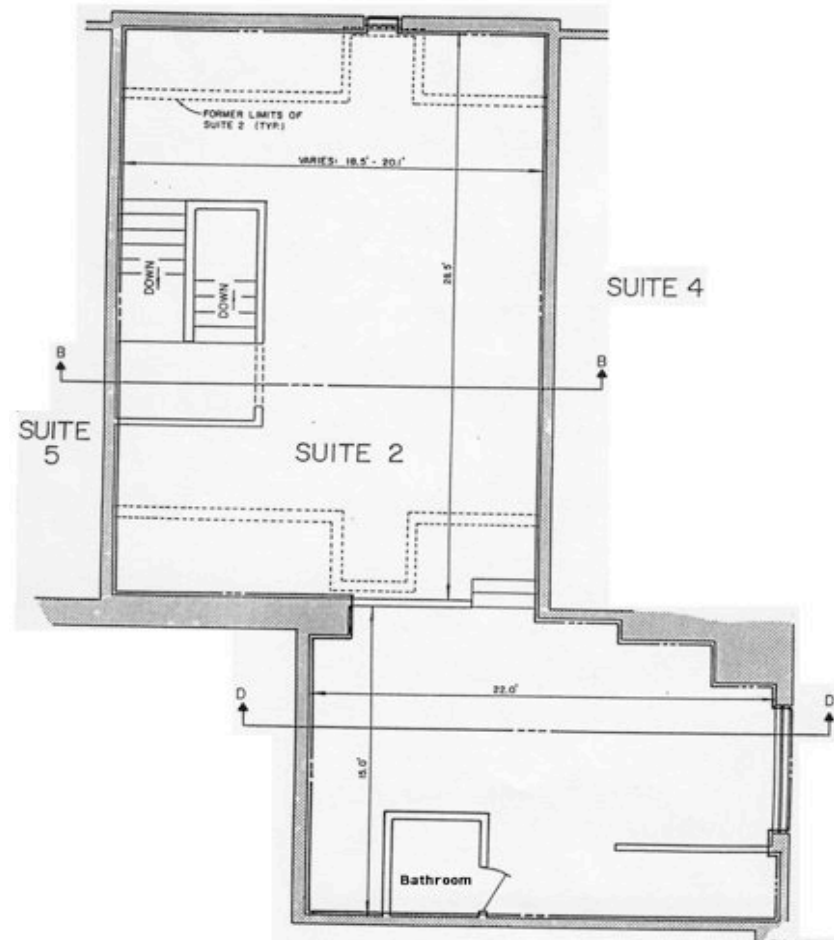
The above information is believed to be accurate but the users must verify it for their own satisfaction. Price and availability is subject to change without prior notice. The Seller's broker, any cooperating broker, and any salesperson working with either, are representing the Seller's interests and have fiduciary responsibilities to Seller, but are obligated to treat all parties fairly.

Floor Plan

**First Floor of Unit
(Second Floor of Building)**



**Second Floor of Unit
(Third Floor of Building)**



3801 Kennett Pike D-100
Greenville Center
Wilmington, Delaware 19807
302-622-3500 800-220-2738
Web Site: www.pattersonwoods.com

Please contact:
Phil Hoge 302-622-3506 hoge@pattersonwoods.com
Greg Ellis 302-622-3534 ellis@pattersonwoods.com

CORFAC
International

The above information is believed to be accurate but the users must verify it for their own satisfaction. Price and availability is subject to change without prior notice. The Seller's broker, any cooperating broker, and any salesperson working with either, are representing the Seller's interests and have fiduciary responsibilities to Seller, but are obligated to treat all parties fairly.