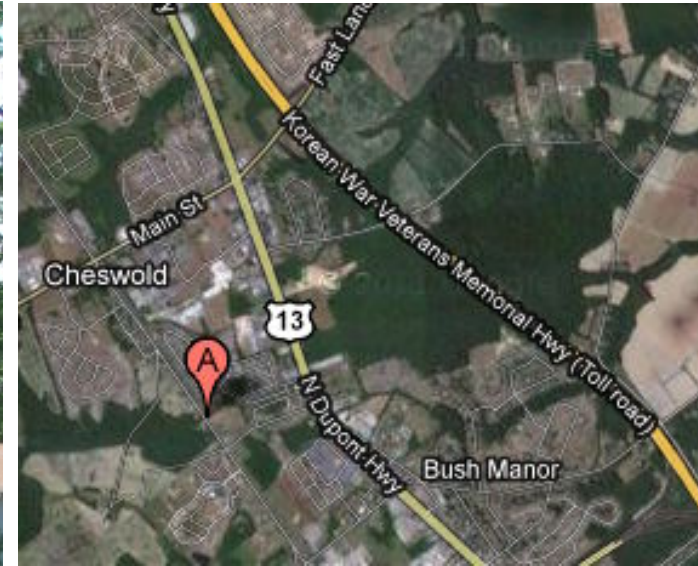


Commercial

BANK REO SALE

3433 McKee Road, Dover, DE

\$115,000



Michael Woods
302-622-3565
mwoods@pattersonwoods.com
3801 Kennett Pike D-100
Greenville Center
Wilmington, Delaware 19807
302-622-3500 800-220-2738
Email: info@pattersonwoods.com
Web Site: www.pattersonwoods.com

- 1.6441 +/- acres pad site
- Former Leon's Convenience Store



The above information is believed to be accurate but the users must verify it for their own satisfaction. Price and availability is subject to change without prior notice. The Seller's broker, any cooperating broker, and any salesperson working with either, are representing the Seller's interests and have fiduciary responsibilities to Seller, but are obligated to treat all parties fairly.