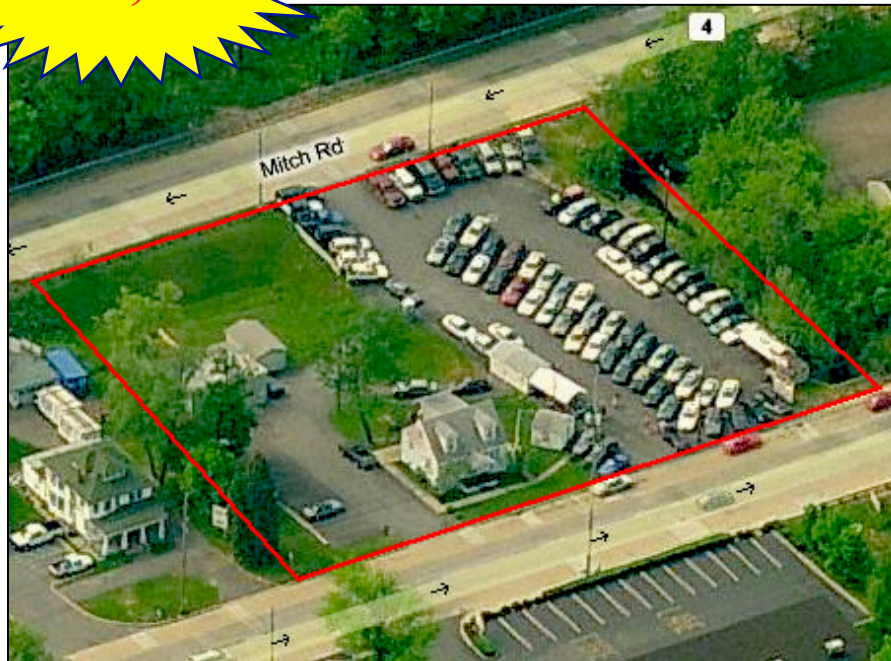


SALE: RETAIL

2412-14 W Newport Pike, Wilmington, DE 19804

Presented by Patterson-Woods & Associates, LLC "The Area's Leading Commercial Broker"

\$495,000



- **FOR SALE: 1.10+/- acres retail land**
- **Zoning: CR – Commercial Regional**
- **Traffic: 56,473 per day**
- **Access to both directions of traffic**
- **House (1,500+ SF) used as office**
- **Misc garages (400+ SF)**
- **Currently used as auto sales lot**
- **Current lease expires March 31, 2012**



3801 Kennett Pike D-100
Greenville Center
Wilmington, Delaware 19807
302-622-3500 800-220-2738
Web Site: www.pattersonwoods.com

Please contact:

Greg Ellis, CCIM

302-622-3534

ellis@pattersonwoods.com

Phil Hoge

302-622-3506

hoge@pattersonwoods.com

CORFAC
International

The above information is believed to be accurate but the user must verify it for its own satisfaction. Price and availability is subject to change without prior notice. The Seller's broker and any salesperson working for Seller's broker are representing the Seller's interests, but are obligated to treat all parties fairly and keep certain information provided by either party confidential.