

# FOR LEASE/SALE: OFFICE SPACE

## 219 W. Ninth Street, Wilmington DE 19801

Presented by Patterson-Woods & Associates "The Area's Leading Commercial Broker"



- Space available from 3,703 s.f. to 23,235 s.f.
- Central downtown Wilmington location.
- 49 car secure parking lot available.
- Rental Rate: \$17/s.f./NNN.
- Opportunity for building signage.
- Lower level secure storage available.
- FOR SALE: Office condos & parking spaces
  - Second or Third Floor (9,766 s.f. each)
  - \$1,220,750 per floor (\$125/s.f.)
  - \$12,500 per parking space



3801 Kennett Pike D-100  
Greenville Center  
Wilmington, Delaware 19807  
302-622-3500 800-220-2738  
Web Site: [www.pattersonwoods.com](http://www.pattersonwoods.com)

Please contact:

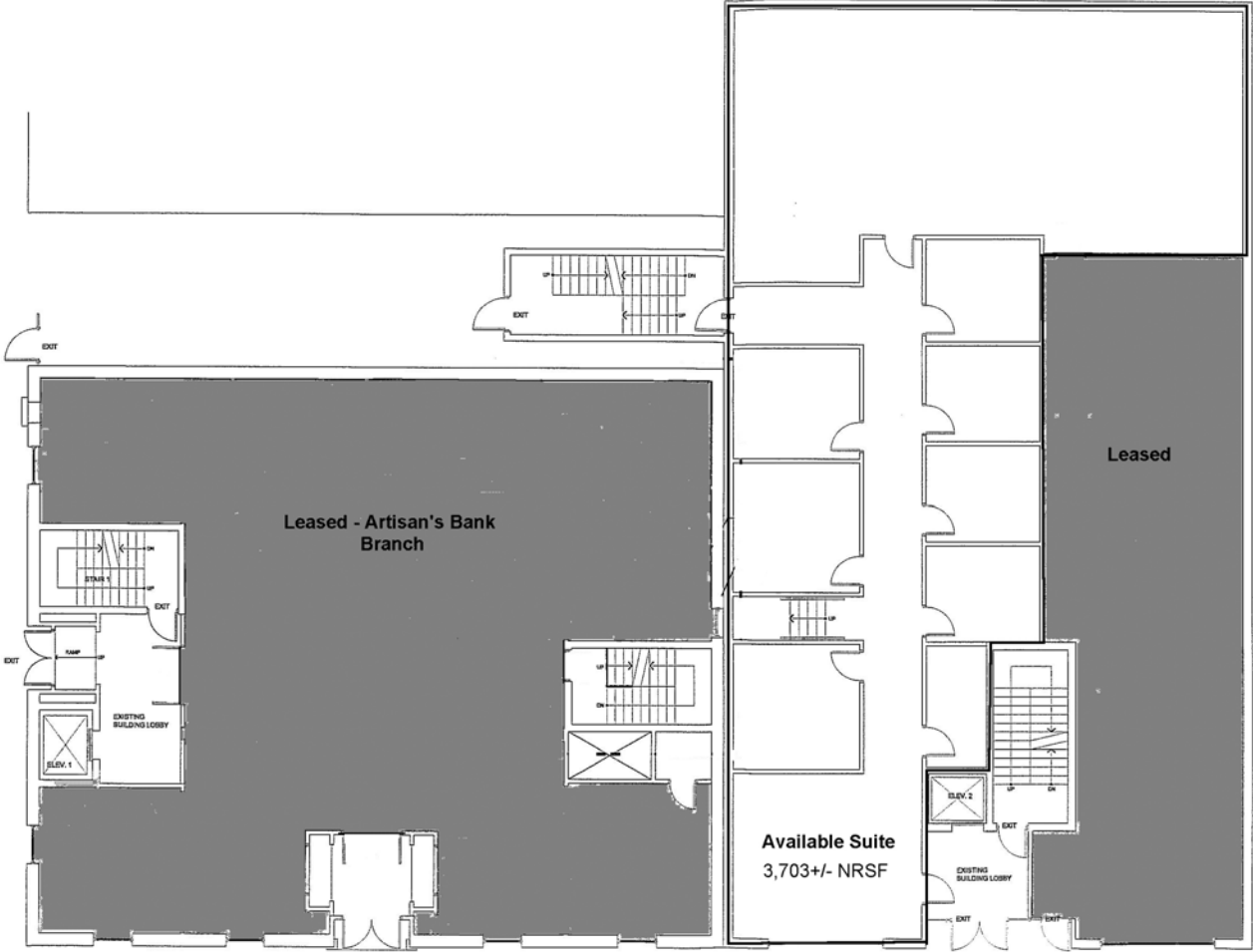
**Phil Hoge** 302-622-3506 [hoge@pattersonwoods.com](mailto:hoge@pattersonwoods.com)

**Greg Ellis** 302-622-3534 [ellis@pattersonwoods.com](mailto:ellis@pattersonwoods.com)

**CORFAC**  
International

*The above information is believed to be accurate but the users must verify it for their own satisfaction. Price and availability is subject to change without prior notice. The Seller's broker and any salesperson working for Seller's broker are representing the Seller's interests, but are obligated to treat all parties fairly and keep certain information provided by either party confidential.*

# Floor Plan - Street Level



219 West Ninth Street - First Floor



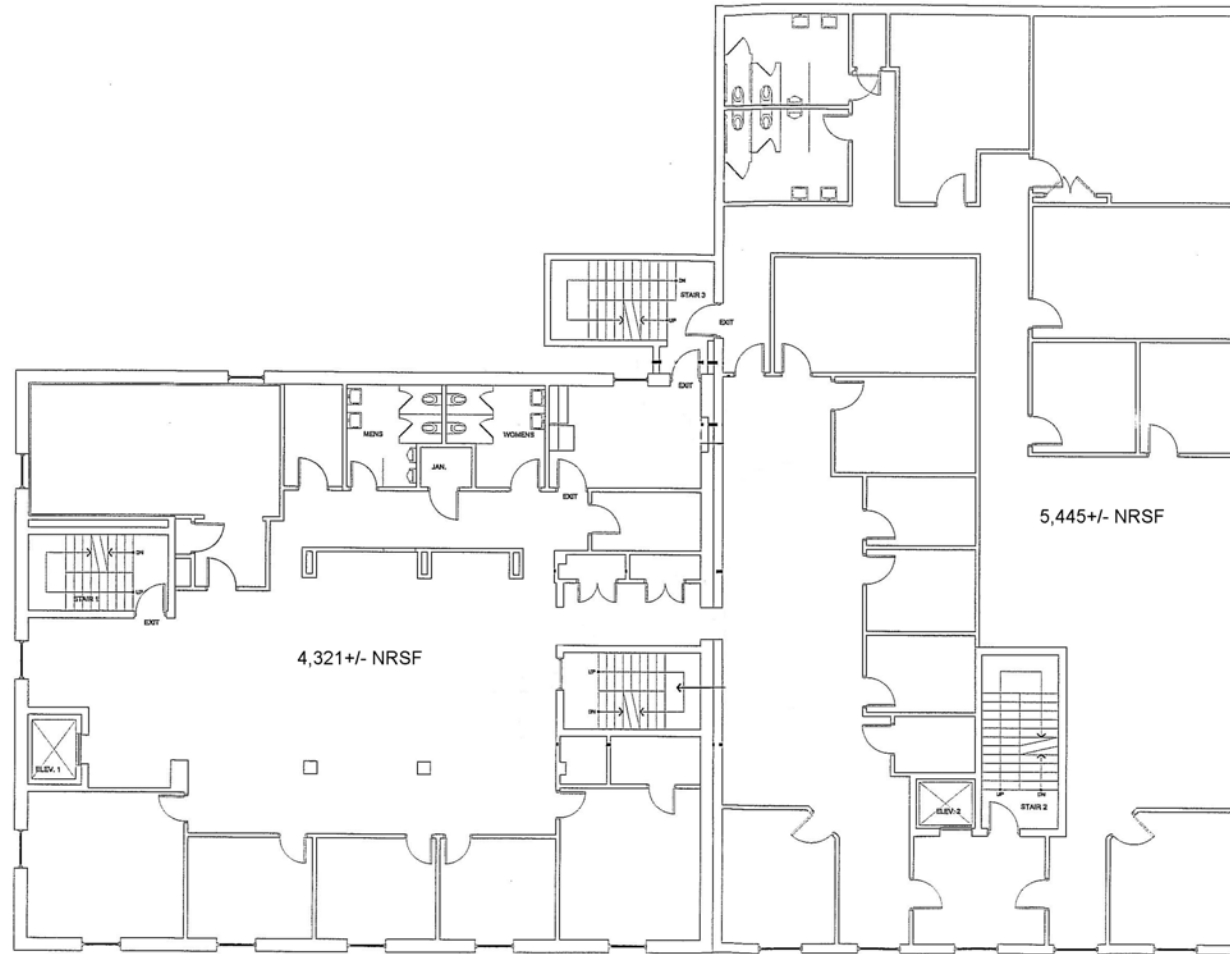
3801 Kennett Pike D-100  
 Greenville Center  
 Wilmington, Delaware 19807  
 302-622-3500 800-220-2738  
 Web Site: [www.pattersonwoods.com](http://www.pattersonwoods.com)

Please contact:  
**Phil Hoge 302-622-3506** [hoge@pattersonwoods.com](mailto:hoge@pattersonwoods.com)  
**Greg Ellis 302-622-3534** [ellis@pattersonwoods.com](mailto:ellis@pattersonwoods.com)

*The above information is believed to be accurate but the users must verify it for their own satisfaction. Price and availability is subject to change without prior notice. The Seller's broker and any salesperson working for Seller's broker are representing the Seller's interests, but are obligated to treat all parties fairly and keep certain information provided by either party confidential.*



# Floor Plan - Second Floor



219 West Ninth Street - Second Floor



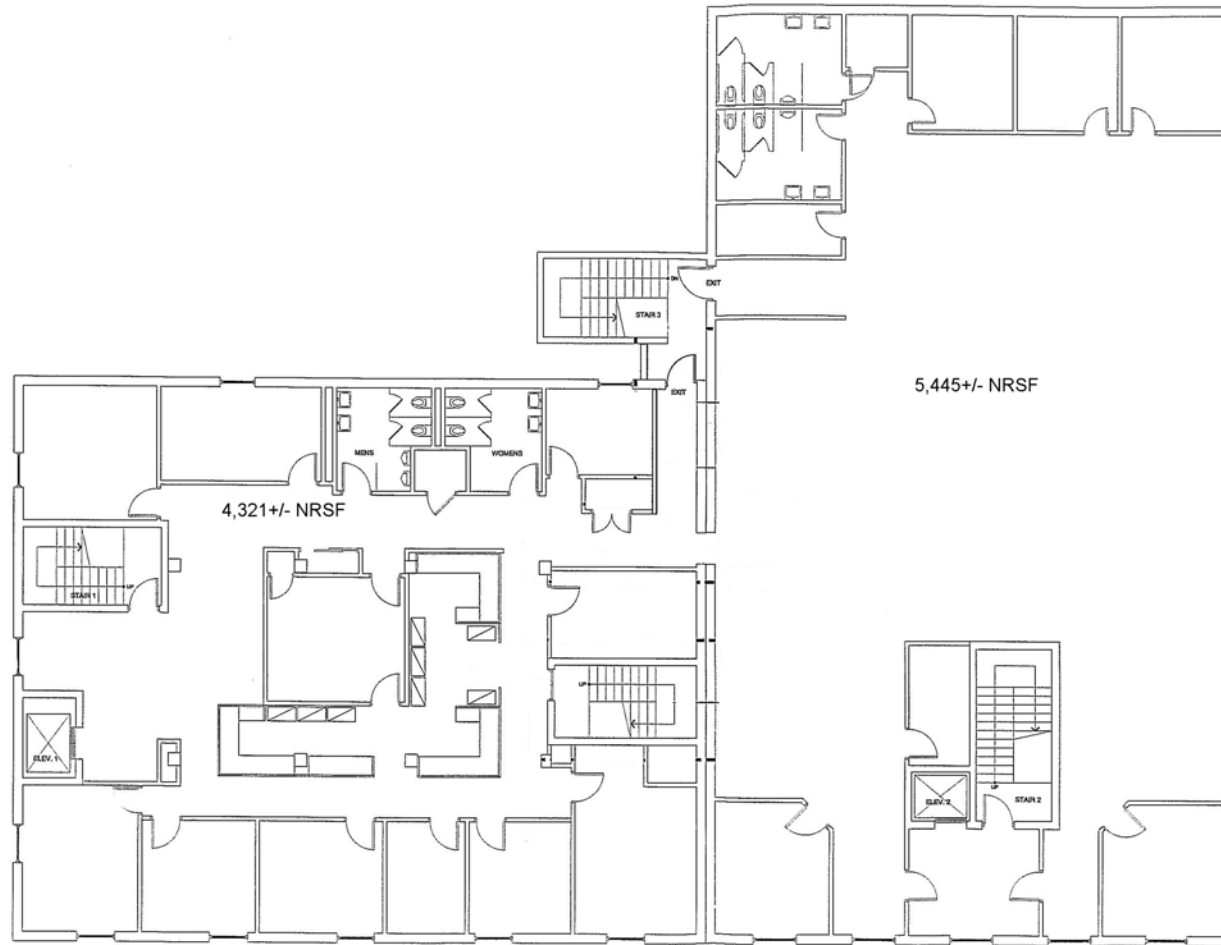
3801 Kennett Pike D-100  
Greenville Center  
Wilmington, Delaware 19807  
302-622-3500 800-220-2738  
Web Site: [www.pattersonwoods.com](http://www.pattersonwoods.com)

Please contact:  
**Phil Hoge** 302-622-3506 [hoge@pattersonwoods.com](mailto:hoge@pattersonwoods.com)  
**Greg Ellis** 302-622-3534 [ellis@pattersonwoods.com](mailto:ellis@pattersonwoods.com)

**CORFAC**  
International

*The above information is believed to be accurate but the users must verify it for their own satisfaction. Price and availability is subject to change without prior notice. The Seller's broker and any salesperson working for Seller's broker are representing the Seller's interests, but are obligated to treat all parties fairly and keep certain information provided by either party confidential.*

# Floor Plan - Third Floor



219 West Ninth Street - Third Floor



3801 Kennett Pike D-100  
Greenville Center  
Wilmington, Delaware 19807  
302-622-3500 800-220-2738  
Web Site: [www.pattersonwoods.com](http://www.pattersonwoods.com)

Please contact:  
**Phil Hoge** 302-622-3506 [hoge@pattersonwoods.com](mailto:hoge@pattersonwoods.com)  
**Greg Ellis** 302-622-3534 [ellis@pattersonwoods.com](mailto:ellis@pattersonwoods.com)

*The above information is believed to be accurate but the users must verify it for their own satisfaction. Price and availability is subject to change without prior notice. The Seller's broker and any salesperson working for Seller's broker are representing the Seller's interests, but are obligated to treat all parties fairly and keep certain information provided by either party confidential.*

**CORFAC**  
International