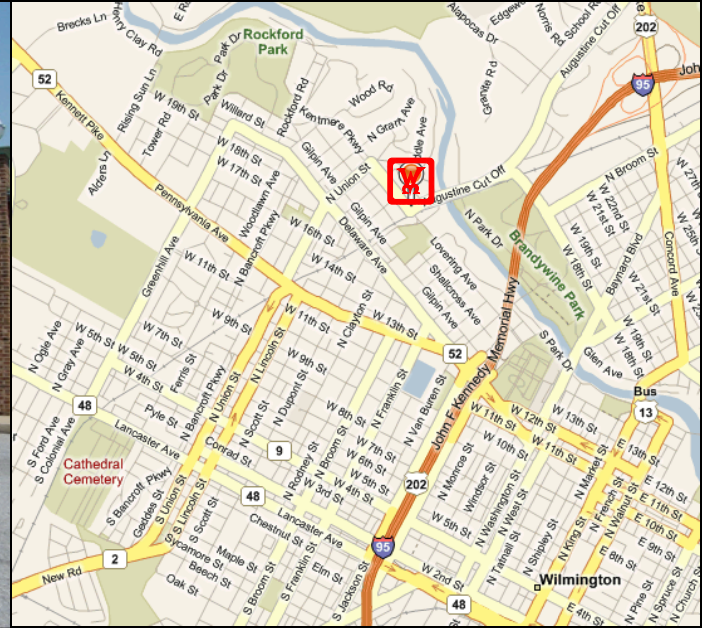


LEASE: RETAIL/AUTO

1705 Lovering Ave, Wilmington, DE 19806

Presented by Patterson-Woods & Associates, LLC "The Area's Leading Commercial Broker"

\$4,000
per mo./NNN



- **FOR LEASE: \$4,000/month/NNN**
- **Retail space or service station**
- **High-visibility traffic-lit corner at Augustine Cutoff**
- **Off-street parking**
- **1701 Lovering also for lease**



3801 Kennett Pike D-100
Greenville Center
Wilmington, Delaware 19807
302-622-3500 800-220-2738
Web Site: www.pattersonwoods.com

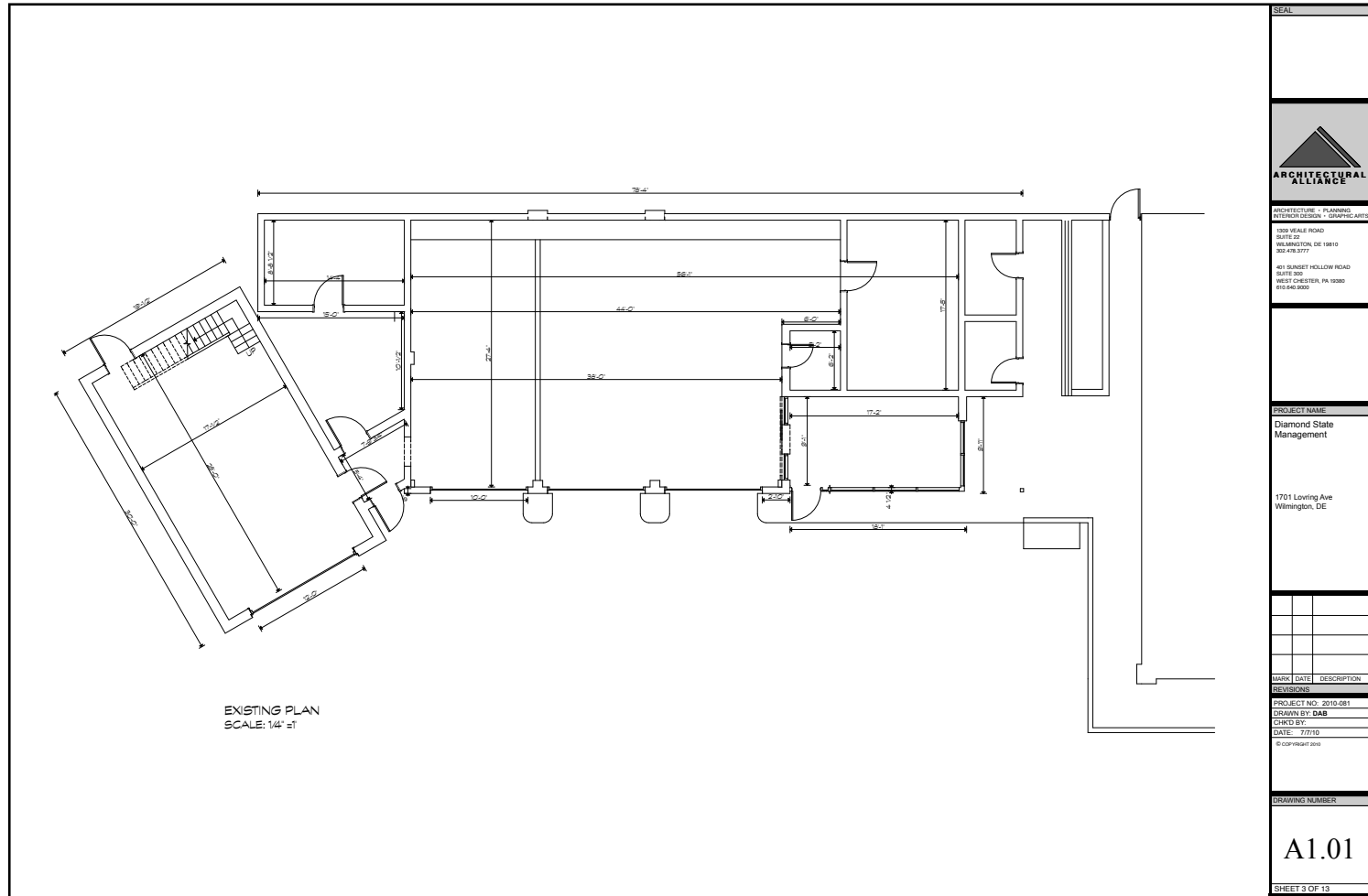
Please contact:

Phil Hoge 302-622-3506 hoge@pattersonwoods.com
Greg Ellis 302-622-3534 ellis@pattersonwoods.com

CORFAC
International

The above information is believed to be accurate but the user must verify it for its own satisfaction. Price and availability is subject to change without prior notice. The Seller's broker and any salesperson working for Seller's broker are representing the Seller's interests, but are obligated to treat all parties fairly and keep certain information provided by either party confidential.

Floorplan



3801 Kennett Pike D-100
Greenville Center
Wilmington, Delaware 19807
302-622-3500 800-220-2738
Web Site: www.pattersonwoods.com

Please contact:

Phil Hoge 302-622-3506 hoge@pattersonwoods.com
Greg Ellis 302-622-3534 ellis@pattersonwoods.com

The above information is believed to be accurate but the user must verify it for its own satisfaction. Price and availability is subject to change without prior notice. The Seller's broker and any salesperson working for Seller's broker are representing the Seller's interests, but are obligated to treat all parties fairly and keep certain information provided by either party confidential.

CORFAC
International