

LEASE: OFFICE or RETAIL SPACE

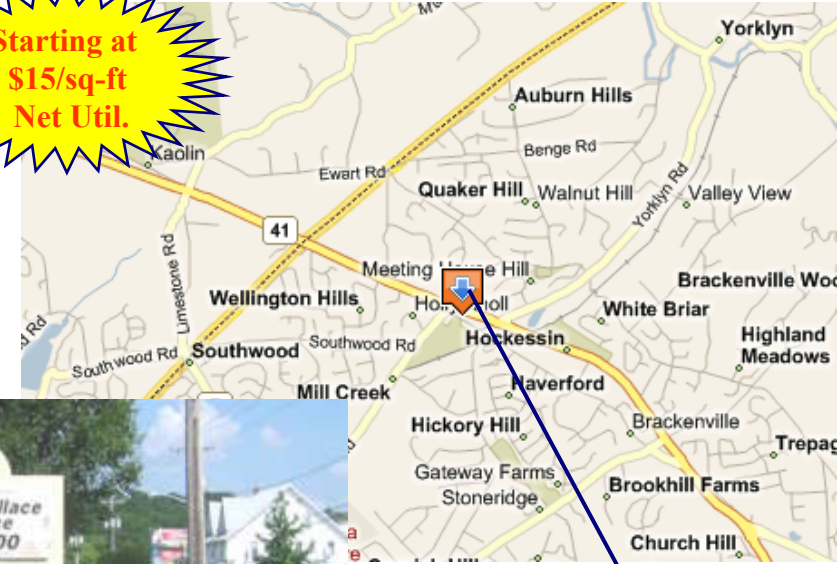
1304 Old Lancaster Pike, Hockessin, DE 19707

Presented by Patterson-Woods & Associates

“The Area’s Leading Commercial Broker”



Starting at
\$15/sq-ft
Net Util.



- Located in the Heart of the Hockessin VillageCenter along Old Lancaster Pike*
- Position your business in the center of town near a high traffic intersection and other high traffic businesses.*
- Get your name noticed by both pedestrians and drivers from **spotlight sign** on Old Lancaster Pike.

* Details on back.



3801 Kennett Pike D-100
Greenville Center
Wilmington, Delaware 19807
302-622-3500 800-220-2738
Email: info@pattersonwoods.com
Web Site: www.pattersonwoods.com

Please contact:
Dan Leshner
302-622-3520
dlesher@pattersonwoods.com

CORFAC
International

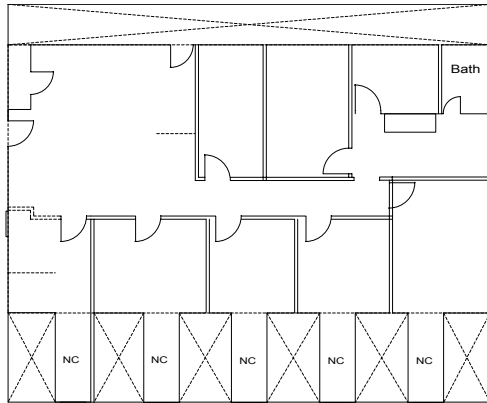
The above information is believed to be accurate but the users must verify it for their own satisfaction. Price and availability is subject to change without prior notice. The Seller's broker, any cooperating broker, and any salesperson working with either, are representing the Seller's interests and have fiduciary responsibilities to Seller, but are obligated to treat all parties fairly.

Location

- Located in the Heart of the Hockessin VillageCenter along Old Lancaster Pike
- Position your business in the center of town near a high traffic intersection and other high traffic businesses.*
- **Walk** to almost any convenient amenities from your office or place of business. Anyone visiting those businesses can walk to yours!
- Plenty of on site parking.



Layout 2nd Floor: (1st floor retail also available)



Suites Featuring:

- Great mix of private offices and larger open area.
- Private Bathroom in suite including shower.
- Kitchenette
- Private Entrance
- **VALUE!!!** No charge (NC) for storage or dormer window aisles. One of the only buildings where you get more space than you pay for as opposed to most buildings where you pay for more space than is in your suite because of common areas.



3801 Kennett Pike D-100
Greenville Center
Wilmington, Delaware 19807
302-622-3500 800-220-2738
Email: info@pattersonwoods.com
Web Site: www.pattersonwoods.com

Please contact:
Dan Leshar
302-622-3520
dlesher@pattersonwoods.com