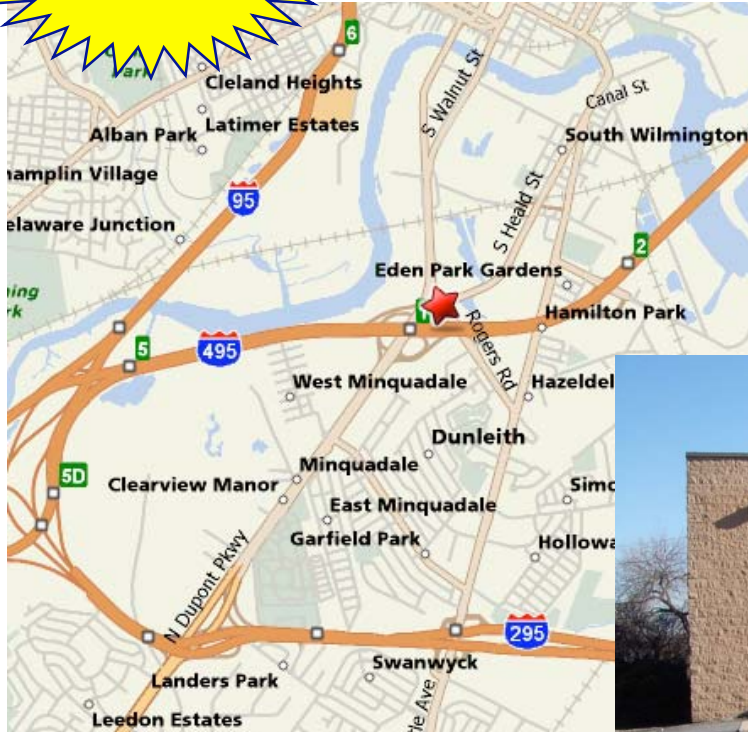


FOR LEASE: OFFICE/FLEX SPACE

103 A+B Rogers Rd., Wilmington, DE 19801

Presented by Patterson-Woods & Associates "The Area's Leading Commercial Broker"

Available NOW!
3,000 - 6,000 s.f.



- Two Suites - 3,000 s.f. each.
- Suites can be combined or leased individually.
- Suite A - Flex office + warehouse:
 - \$7.00/s.f. plus utilities and janitorial.
- Suite B - Flex office space:
 - \$9.00/s.f. plus utilities and janitorial.
- Each suite has one loading dock.
- Heating and air conditioning in flex space.
- Plenty of parking.
- Floorplans may be modified.
- Convenient access to 495, 13, 95, 295, and Port.



3801 Kennett Pike D-100
Greenville Center
Wilmington, Delaware 19807
302-622-3500 800-220-2738
Web Site: www.pattersonwoods.com

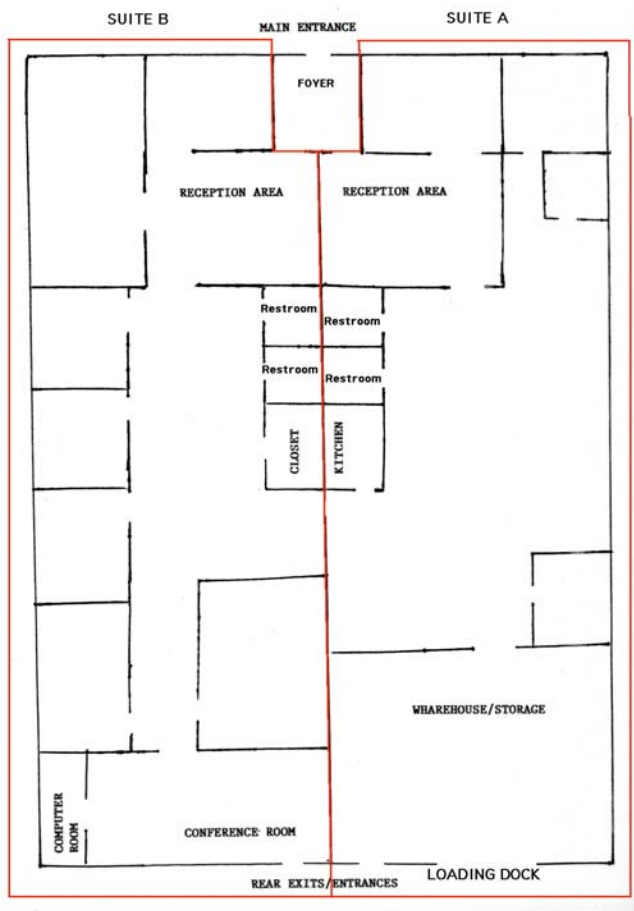
Please contact:

Phil Hoge 302-622-3506 hoge@dca.net
Greg Ellis 302-622-3534 ellis@pattersonwoods.com

CORFAC
International

The above information is believed to be accurate but the users must verify it for their own satisfaction. Price and availability is subject to change without prior notice. The Seller's broker, any cooperating broker, and any salesperson working with either, are representing the Seller's interests and have fiduciary responsibilities to Seller, but are obligated to treat all parties fairly.

Floorplan/Additional Photo



CORFAC
International



3801 Kennett Pike D-100
Greenville Center
Wilmington, Delaware 19807
302-622-3500 800-220-2738
Web Site: www.pattersonwoods.com

Please contact:

Phil Hoge 302-622-3506 hoge@dca.net
Greg Ellis 302-622-3534 ellis@pattersonwoods.com

The above information is believed to be accurate but the users must verify it for their own satisfaction. Price and availability is subject to change without prior notice. The Seller's broker, any cooperating broker, and any salesperson working with either, are representing the Seller's interests and have fiduciary responsibilities to Seller, but are obligated to treat all parties fairly.