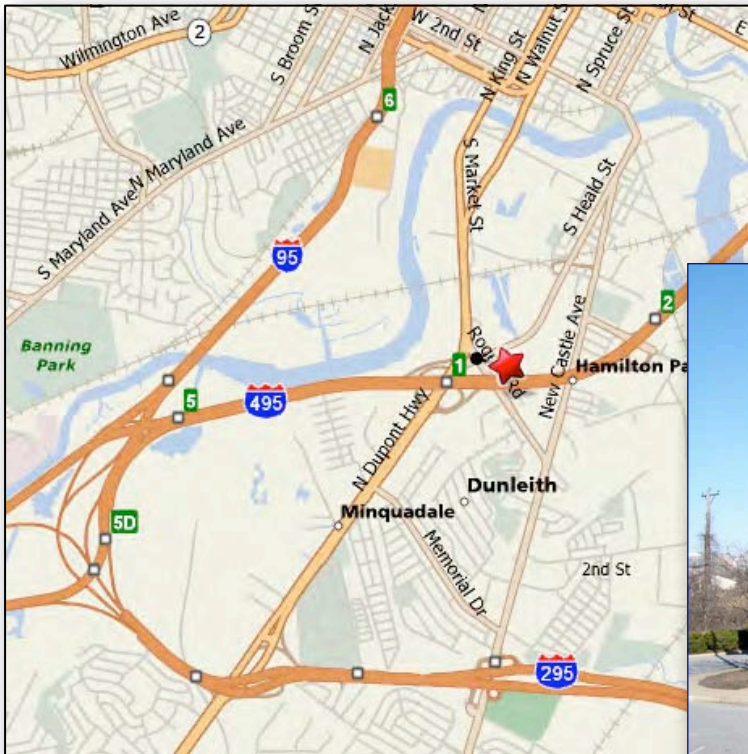


FOR LEASE: OFFICE SPACE

101 Rogers Rd., Suite 101, Wilmington, DE 19801

Presented by Patterson-Woods & Associates "The Area's Leading Commercial Broker"



- 2,000 s.f. office suite for lease
- Rent: \$1,670.00 per month plus utilities
- Secure building
- Plenty of parking
- Convenient access to 495, 13, 95, 295, and Port



3801 Kennett Pike D-100
Greenville Center
Wilmington, Delaware 19807
302-622-3500 800-220-2738
Web Site: www.pattersonwoods.com

Please contact:

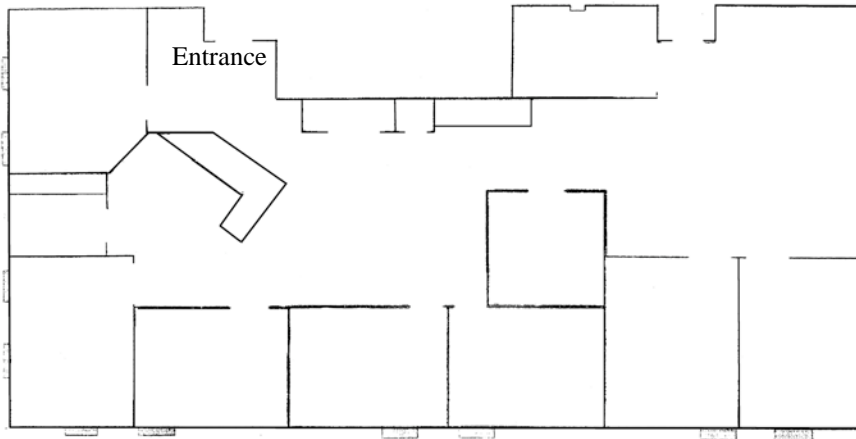
Phil Hoge 302-622-3506 hoge@pattersonwoods.com

Greg Ellis 302-622-3534 ellis@pattersonwoods.com

CORFAC
International

The above information is believed to be accurate but the users must verify it for their own satisfaction. Price and availability is subject to change without prior notice. The Seller's broker, any cooperating broker, and any salesperson working with either, are representing the Seller's interests and have statutory responsibilities to Seller, but are obligated to treat all parties fairly.

Floorplan/Interior Photos



CORFAC
International

**PATTERSON
WOODS**
COMMERCIAL PROPERTIES

3801 Kennett Pike D-100
Greenville Center
Wilmington, Delaware 19807
302-622-3500 800-220-2738
Web Site: www.pattersonwoods.com

Please contact:

Phil Hoge 302-622-3506 hoge@pattersonwoods.com

Greg Ellis 302-622-3534 ellis@pattersonwoods.com

The above information is believed to be accurate but the users must verify it for their own satisfaction. Price and availability is subject to change without prior notice. The Seller's broker, any cooperating broker, and any salesperson working with either, are representing the Seller's interests and have statutory responsibilities to Seller, but are obligated to treat all parties fairly.