

LEASE: SHOP/GARAGE/OFFICE

100 Greenhill Ave., Wilmington, DE 19805

Presented by Patterson-Woods & Associates, LLC "The Area's Leading Commercial Broker"

Available
Now



- **FOR LEASE: Two Shop/Garage Suites and Two Office Suites**
- **Shop Suites: 1,160 s.f. (\$870/mo. +util.) or 1,440 s.f. (\$1,080/mo. +util.)**
- **Office Suites: 1,460 s.f. (\$1,215/mo. +util.) or 1,650 s.f. (\$1,375/mo. +util.)**
- **Newly renovated with sprinkler system**
- **Convenient location just off Greenhill and Lancaster Avenues**



3801 Kennett Pike D-100
Greenville Center
Wilmington, Delaware 19807
302-622-3500 800-220-2738
Web Site: www.pattersonwoods.com

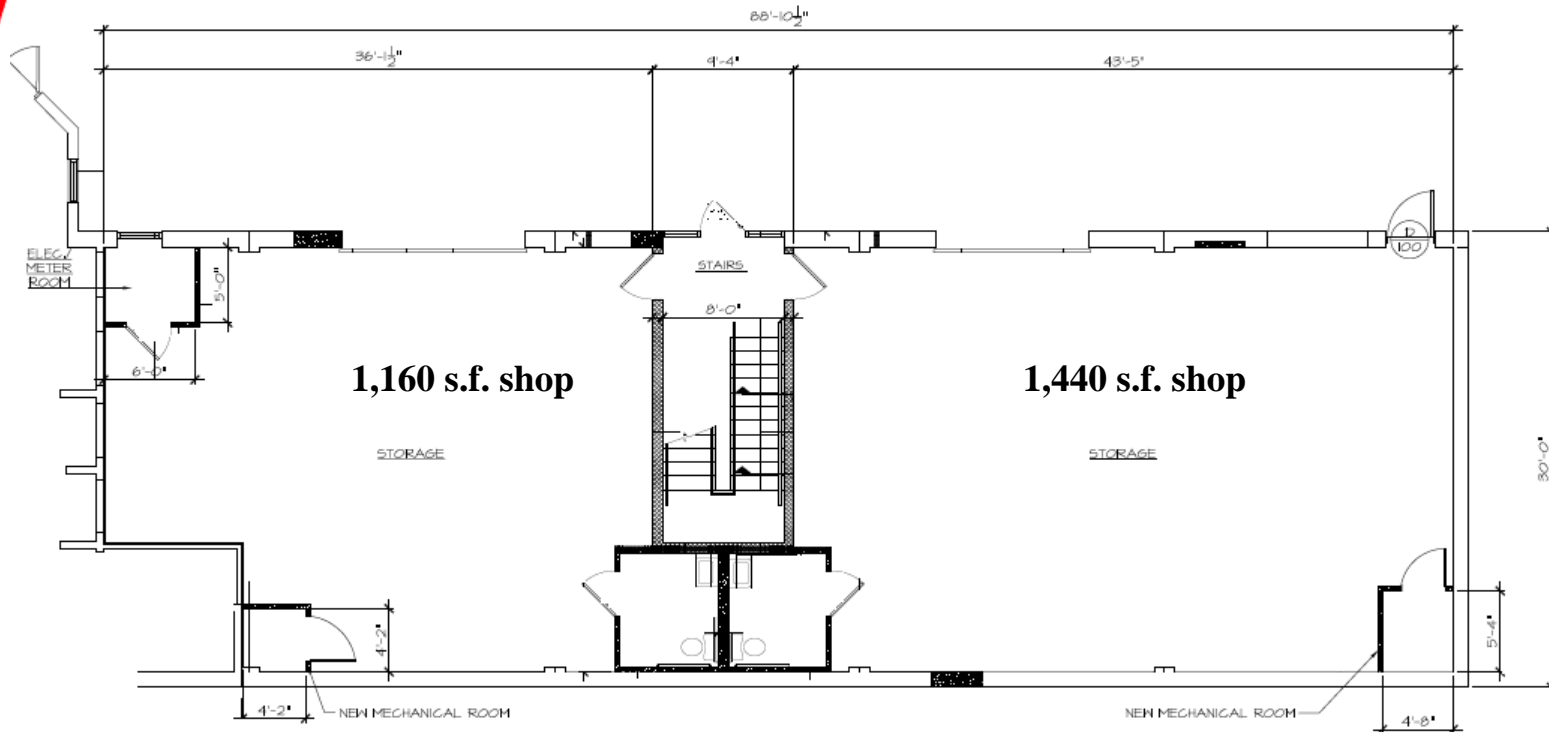
Please contact:

Greg Ellis, CCIM 302-622-3534 ellis@pattersonwoods.com
Phil Hoge 302-622-3506 hoge@pattersonwoods.com

CORFAC
International

The above information is believed to be accurate but the user must verify it for its own satisfaction. Price and availability is subject to change without prior notice. The Seller's broker and any salesperson working for Seller's broker are representing the Seller's interests, but are obligated to treat all parties fairly and keep certain information provided by either party confidential.

Floorplan for Shop Space



3801 Kennett Pike D-100
Greenville Center
Wilmington, Delaware 19807
302-622-3500 800-220-2738
Web Site: www.pattersonwoods.com

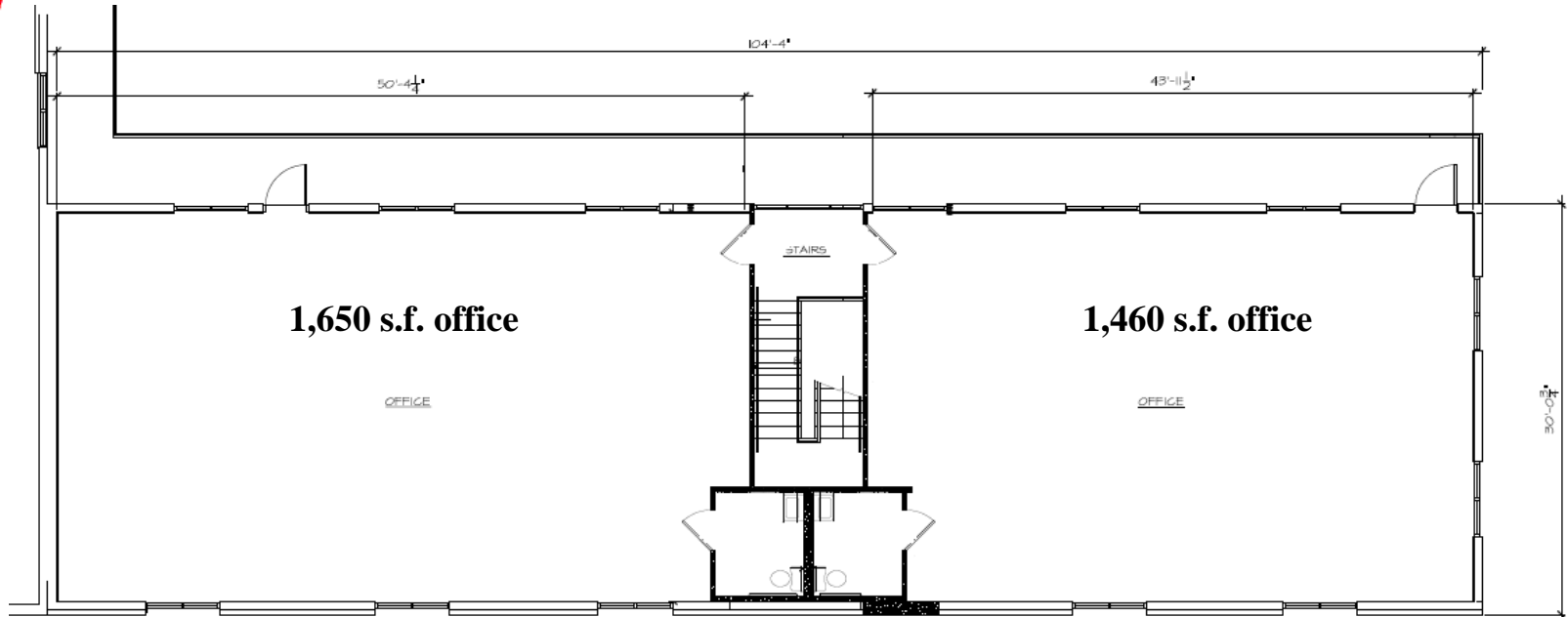
Please contact:

Greg Ellis, CCIM 302-622-3534 ellis@pattersonwoods.com
Phil Hoge 302-622-3506 hoge@pattersonwoods.com

CORFAC
International

The above information is believed to be accurate but the user must verify it for its own satisfaction. Price and availability is subject to change without prior notice. The Seller's broker and any salesperson working for Seller's broker are representing the Seller's interests, but are obligated to treat all parties fairly and keep certain information provided by either party confidential.

Floorplan for Office Space



3801 Kennett Pike D-100
Greenville Center
Wilmington, Delaware 19807
302-622-3500 800-220-2738
Web Site: www.pattersonwoods.com

Please contact:

Greg Ellis, CCIM 302-622-3534 ellis@pattersonwoods.com
Phil Hoge 302-622-3506 hoge@pattersonwoods.com

CORFAC
International

The above information is believed to be accurate but the user must verify it for its own satisfaction. Price and availability is subject to change without prior notice. The Seller's broker and any salesperson working for Seller's broker are representing the Seller's interests, but are obligated to treat all parties fairly and keep certain information provided by either party confidential.