

FOR SALE

PARKING LOT

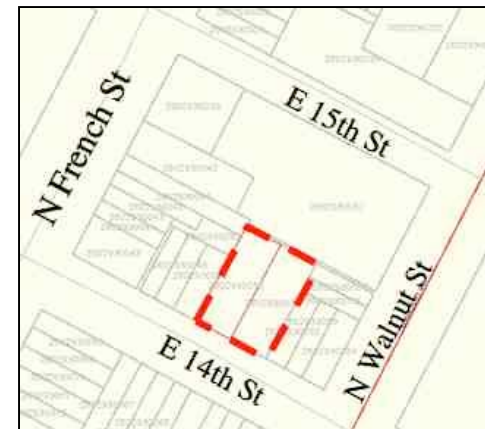
Presented By Patterson-Woods & Associates

"The Area's Leading Commercial Broker"

209-211 E 14th Street
Wilmington, DE



- ✓ 209-211 E 14th St, Wilmington DE
- ✓ 24 striped parking spaces
- ✓ Fenced area
- ✓ Ideal for Investor, Nearby Business or Redevelopment
- ✓ Zoned M-1 Industrial



Charles Woods
302-622-3505

or

Michael Woods
302-622-3565



CORFAC
International

3801 Kennett Pike D-100 Wilmington Delaware 19807 302-622-3500 800-220-2738 Email: info@pattersonwoods.com www.pattersonwoods.com

The above information is believed to be accurate but the users must verify it for their own satisfaction. Price and availability is subject to change without prior notice. The Seller's broker, any cooperating broker, and any salesperson working with either, are representing the Seller's interests and have fiduciary responsibilities to Seller, but are obligated to treat all parties fairly.

