

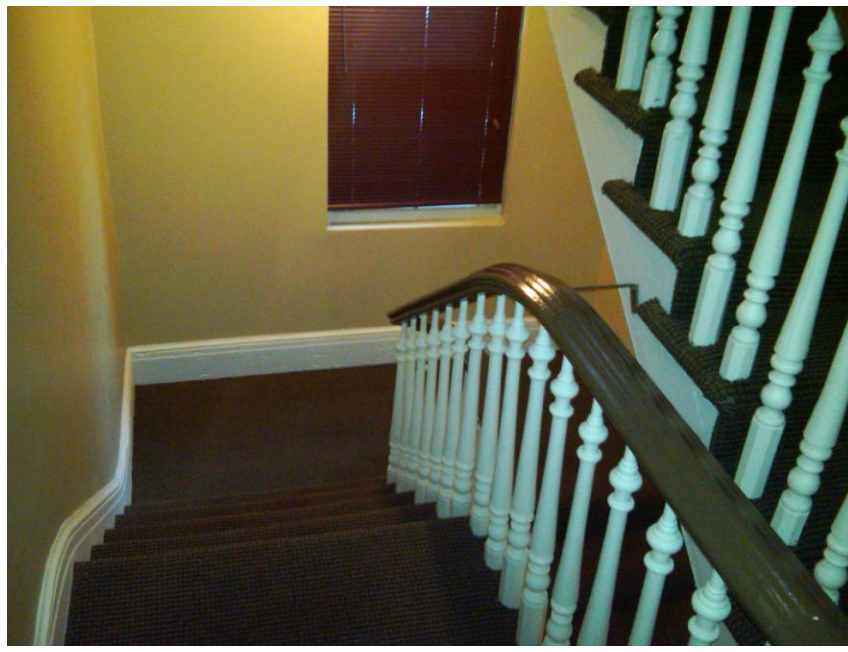
FOR SALE

Investment property

800 Washington Street

5 unit fully leased apartment building, separately metered. Close to downtown business district, all new windows, utilities, building in excellent condition. Turn key investment property~

Taxes \$1671 per year, .07 acres, \$33,000 NOI



Please contact:

Demetri Kyranakis (302) 622-3523

dk@pattersonwoods.com

Patterson-Woods & Assoc., LLC

3801 Kennett Pike, D-100, Greenville, Delaware 19807

Main (302) 622-3500 Fax (302) 622-3535

www.pattersonwoods.com

Exclusively Offered By:

**PATTERSON
WOODS**
COMMERCIAL PROPERTIES

CORFAC
International

The above information is believed to be accurate, but prospective buyers or tenants must verify it to their own satisfaction. Price and availability are subject to change without prior notice. The seller's or landlord's broker, any cooperating broker and any salesperson working with either, are representing the seller or landlord interests, but are obligated to treat all parties fairly. Any variance in representation must be disclosed.