

LEASE

RETAIL/OFFICE

Presented by Patterson-Woods & Associates

“The Area’s Leading Commercial Broker”

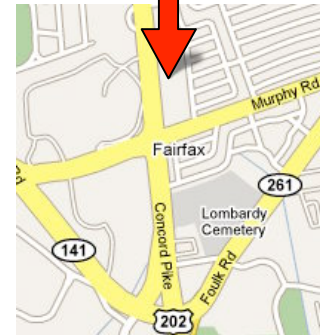
2001 Concord Pike Wilmington, DE

**2nd floor Office:
\$15/sq ft + utilities**

**1st floor Retail:
\$20/sq ft NNN**



- Easy Access Location - close to 141 & I-95
- Great Traffic counts = 48,251 AADT
- 2009 population 3 mile=83,012, 5 mile=188,206
- 2009 Median HHI 3 mile=\$68,301, 5 mile=\$62,336
- First and Second floor space available
- Great deal on basement space - high ceilings:low rent
- Call for pricing and availability



Call Michael Woods
302-622-3565
mwoods@pattersonwoods.com

**PATTERSON
WOODS**
COMMERCIAL PROPERTIES

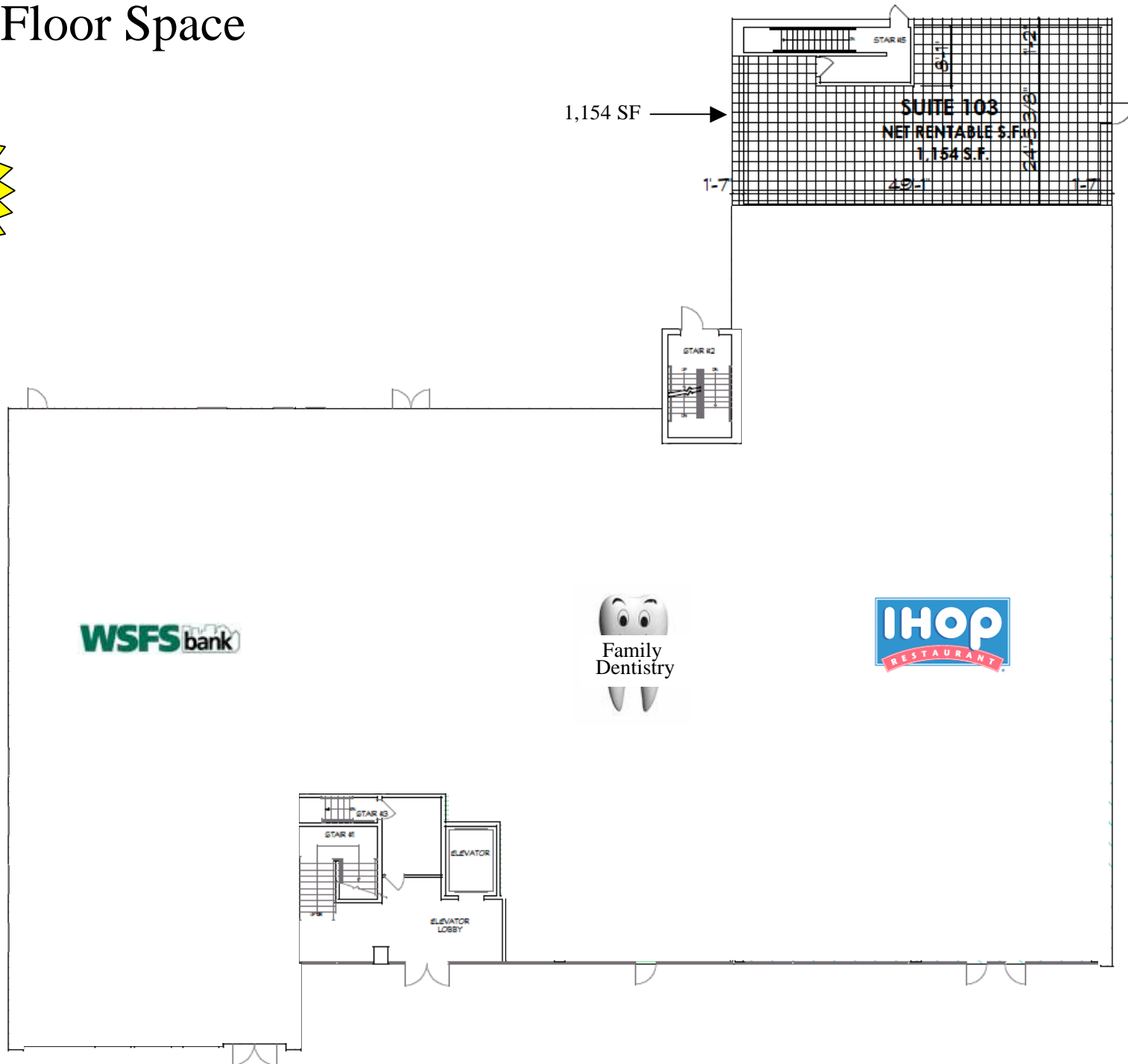
**3801 Kennett Pike D-100
Greenville Center
Wilmington, Delaware 19807
302-622-3500 800-220-2738
Email: info@pattersonwoods.com
Web Site: www.pattersonwoods.com**

CORPAC
SOP
INTERNATIONAL ASSOCIATION
OF REAL ESTATE BROKERS
INTERNATIONAL ASSOCIATION
OF REAL ESTATE BROKERS

The above information is believed to be accurate but the users must verify it for their own satisfaction. Price and availability is subject to change without prior notice. The Seller's broker, any cooperating broker, and any salesperson working with either, are representing the Seller's interests and have fiduciary responsibilities to Seller, but are obligated to treat all parties fairly.

1st Floor Space

**1st floor Retail:
\$20/sq ft NNN**



The above information is believed to be accurate but the users must verify it for their own satisfaction. Price and availability is subject to change without prior notice. The Seller's broker, any cooperating broker, and any salesperson working with either, are representing the Seller's interests and have fiduciary responsibilities to Seller, but are obligated to treat all parties fairly.

2nd Floor Space

**2nd floor Office:
\$15/sq ft + electric**

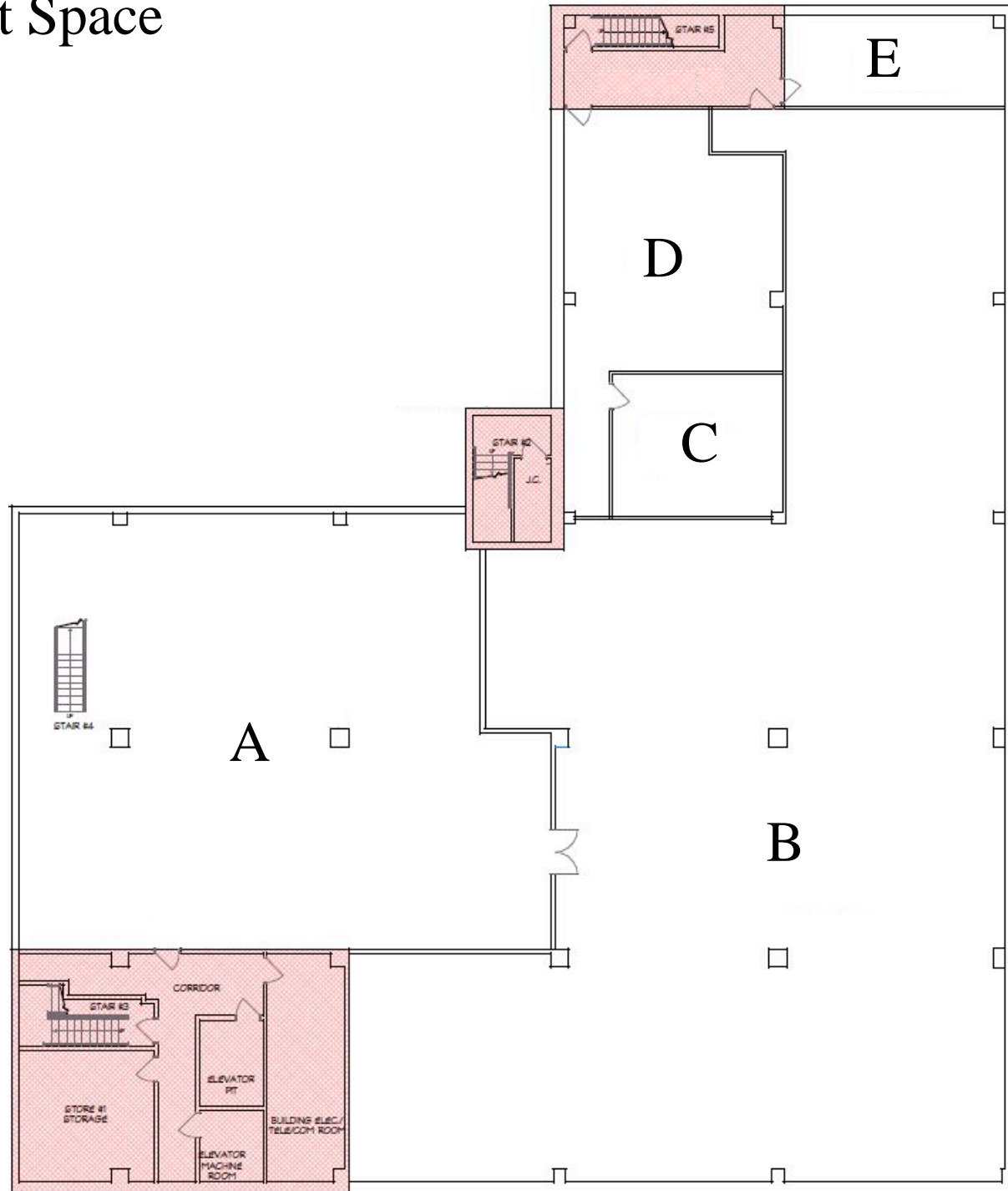
Suite	Sq Feet
Suite 200	3,771
Suite 201	2,533
Suite 202	1,514
Suite 203	976
Suite 204	1,202
Suite 205	723
Suite 206	1,222



The above information is believed to be accurate but the users must verify it for their own satisfaction. Price and availability is subject to change without prior notice. The Seller's broker, any cooperating broker, and any salesperson working with either, are representing the Seller's interests and have fiduciary responsibilities to Seller, but are obligated to treat all parties fairly.

Basement Space

Common Areas



The above information is believed to be accurate but the users must verify it for their own satisfaction. Price and availability is subject to change without prior notice. The Seller's broker, any cooperating broker, and any salesperson working with either, are representing the Seller's interests and have fiduciary responsibilities to Seller, but are obligated to treat all parties fairly.



The above information is believed to be accurate but the users must verify it for their own satisfaction. Price and availability is subject to change without prior notice. The Seller's broker, any cooperating broker, and any salesperson working with either, are representing the Seller's interests and have fiduciary responsibilities to Seller, but are obligated to treat all parties fairly.