

GENERAL SHEET NOTES

- ALL DIMENSIONS ARE TO THE FACE OF STRUCTURE, UNLESS NOTED OTHERWISE.
- FLASH PATCH ALL SUBFLOORS AT FORMER PARTITION LOCATIONS.

Three Mill Road, Suite 211
Wilmington, DE 19806
T 302-622-9550 F 302-622-9554

Kennett Square, Pennsylvania
Downingtown, Pennsylvania

www.bernardon.com

Mechanical/Electrical Engineers:
**BLAKE & VAUGHAN
ENGINEERING, INC.**
Trolley Square, Suite 24C
Wilmington, DE 19806
302-888-1780

Project:
**3RD FLOOR OFFICE
RENOVATION**
1925 Lovering Ave.
Wilmington, DE 19806

Client:
**BUILDERS & MANAGERS,
INC.**
1201 N. Orange St., Suite 700
Wilmington, DE 19801

Owner:
**GORDON, FOURNARIS &
MAMMARELLA, P.A.**
1925 Lovering Ave.
Wilmington, DE 19806
302-652-2900

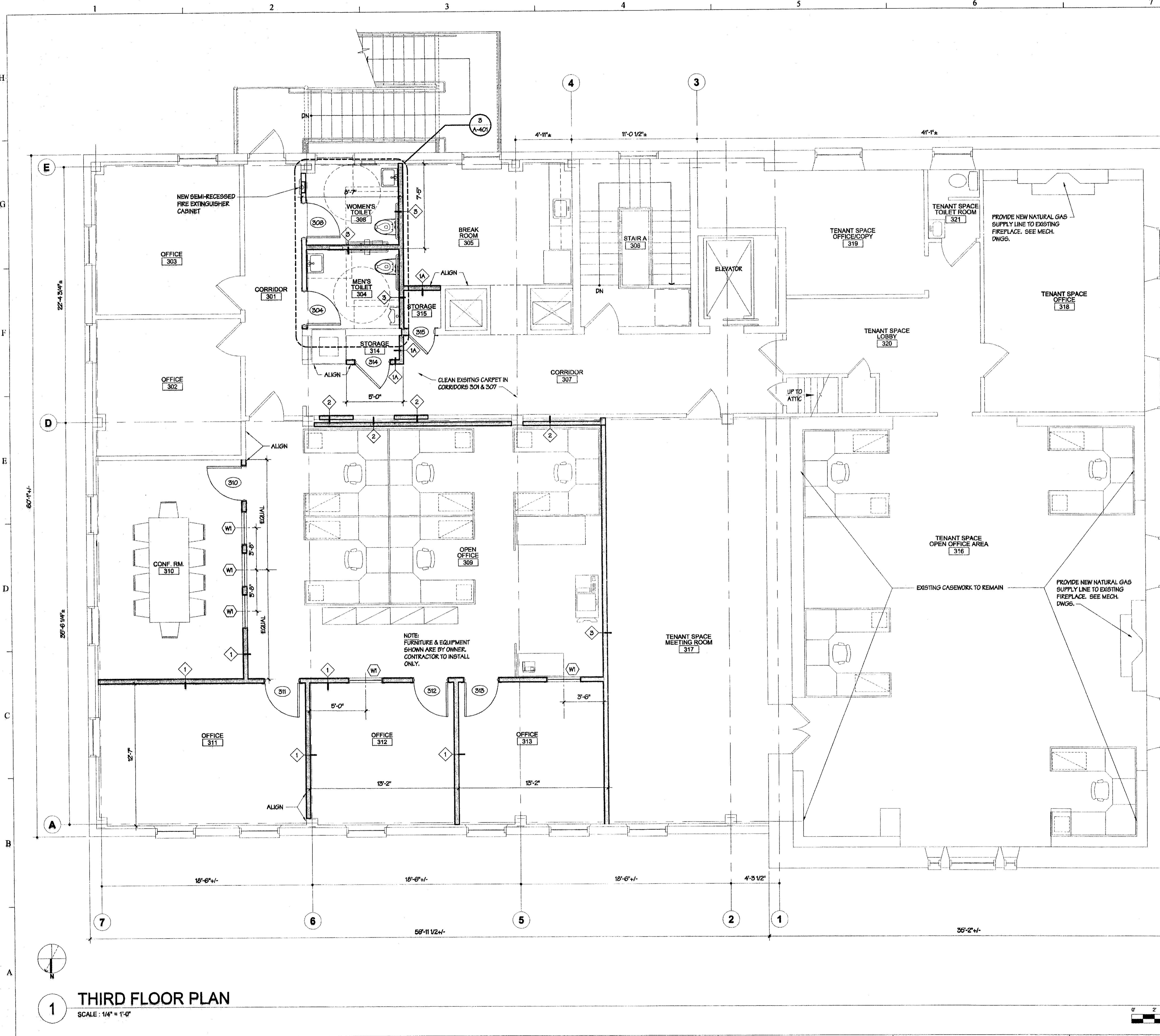
Revision/Issue:
0 03/23/07 Issued for Construction

Drawn: TM
Reviewed: DW
Contact: Dan Wrightson
Project Number: 1352.01-07

Sheet Title:
THIRD FLOOR PLAN

Sheet Number:

A-101



FINISH SCHEDULE

RM. NUM.	ROOM NAME	FLOOR	BASE	WALL	CEILING
301	CORRIDOR	EXISTING TO REMAIN PATCH & REPAIR VINYL COMPOSITION TILE			
302	OFFICE		EXISTING TO REMAIN 4" RESILIENT BASE		
303	OFFICE		6" RESILIENT BASE		
304	MEN'S TOILET ROOM		WOOD BASE - MATCH EXISTING		
305	BREAK ROOM			EXISTING TO REMAIN	
306	STAIR				
307	CORRIDOR				
308	WOMEN'S TOILET ROOM				
309	OPEN OFFICE AREA				
310	CONFERENCE ROOM				
311	OFFICE				
312	OFFICE				
313	OFFICE				
314	STORAGE				
315	STORAGE				
316	TENANT-OPEN OFFICE				
317	TENANT-MEETING RM.				
318	TENANT-OFFICE				
319	TENANT-OFFICE/COPY				
320	TENANT-LOBBY				
321	TENANT-TOILET ROOM				

REMARKS
1. PROVIDE 800 SQUARE FEET OF NEW CARPET AS ATTIC STOCK IN 18" WIDE ROLL.

1 THIRD FLOOR PLAN
SCALE: 1/4" = 1'-0"

