

# LEASE

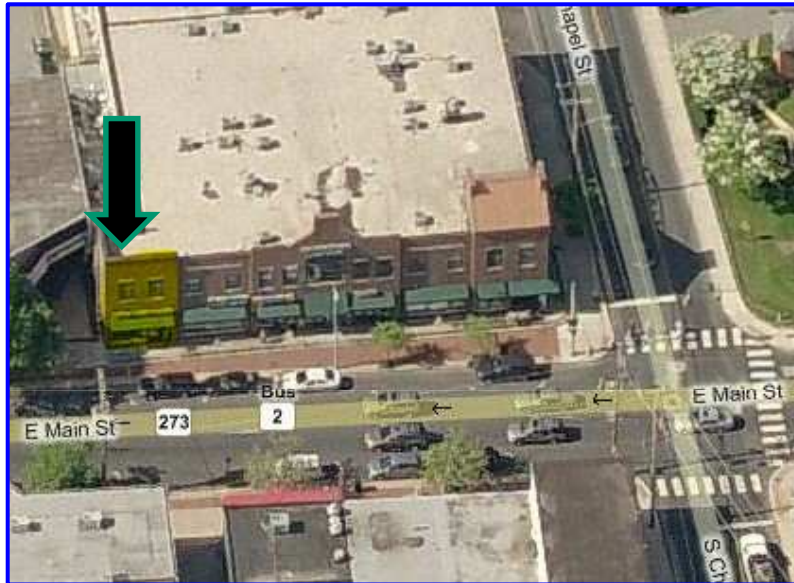
# RETAIL

Presented by Patterson-Woods & Associates

"Delaware's #1 Commercial Broker"

## 172 East Main Street

Astra Plaza, Newark, Delaware 19711



- 1,800+/- Square Feet Available
- High Profile Main Street Location
- \$17 psf, Net of Utilities

**Joe Latina**

**302-622-3512**

**[jlatina@pattersonwoods.com](mailto:jlatina@pattersonwoods.com)**

**PATTERSON  
WOODS**  
COMMERCIAL PROPERTIES

3801 Kennett Pike D-100  
Greenville Center  
Wilmington, Delaware 19807  
302-622-3500 800-220-2738  
Email: [info@pattersonwoods.com](mailto:info@pattersonwoods.com)  
Web Site: [www.pattersonwoods.com](http://www.pattersonwoods.com)



**CORFAC**  
International

The above information is believed to be accurate but the users must verify it for their own satisfaction. Price and availability is subject to change without prior notice. The Seller's broker, any cooperating broker, and any salesperson working with either, are representing the Seller's interests and have fiduciary responsibilities to Seller, but are obligated to treat all parties fairly.