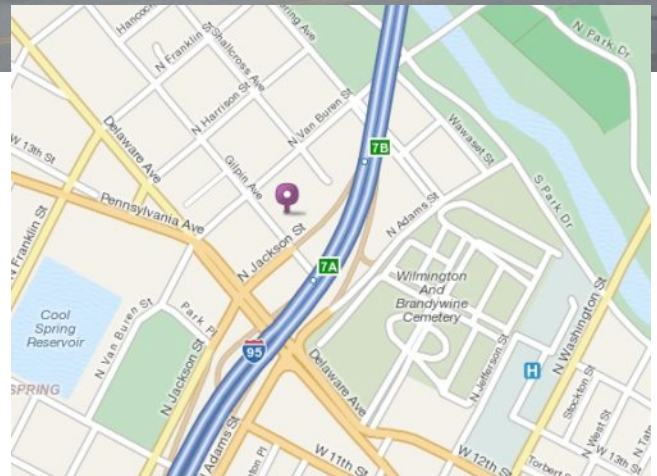


# Medical Office

# Sale or Lease

1021 Gilpin Avenue #203, Wilmington DE 19806



This property was formerly home to a successful General, Head & Neck and Oncology Surgery Laparoscopy/Endoscopy practice that grew to be too large for the space and relocated. The owner of the condo unit has engaged Patterson-Woods & Associates to market the property for Lease or for Sale.

2nd floor office space  
1,379+/- sq ft  
\$2,000 per month plus utilities  
\$249,000 For Sale

Reception/Nurses station  
3-4 Operatories  
Dr Office  
Kitchen/storage



Michael Woods  
302-622-3565  
mwoods@pattersonwoods.com

Charles Woods  
302-622-3505  
woods@pattersonwoods.com



302-622-3500 / 800-220-2738

3801 Kennett Pike D-100

Wilmington, Delaware 19807

*The above information is believed to be accurate but the users must verify it for their own satisfaction. Price and availability is subject to change without prior notice. The Seller's broker, any cooperating broker, and any salesperson working with either, are representing the Seller's interests and have fiduciary responsibilities to Seller, but are obligated to treat all parties fairly.*



OFFICE



ACCOUNTING/FILING



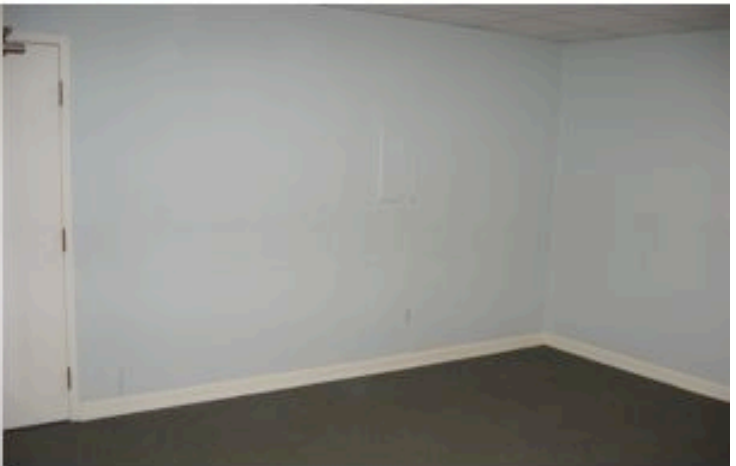
OPERATORY



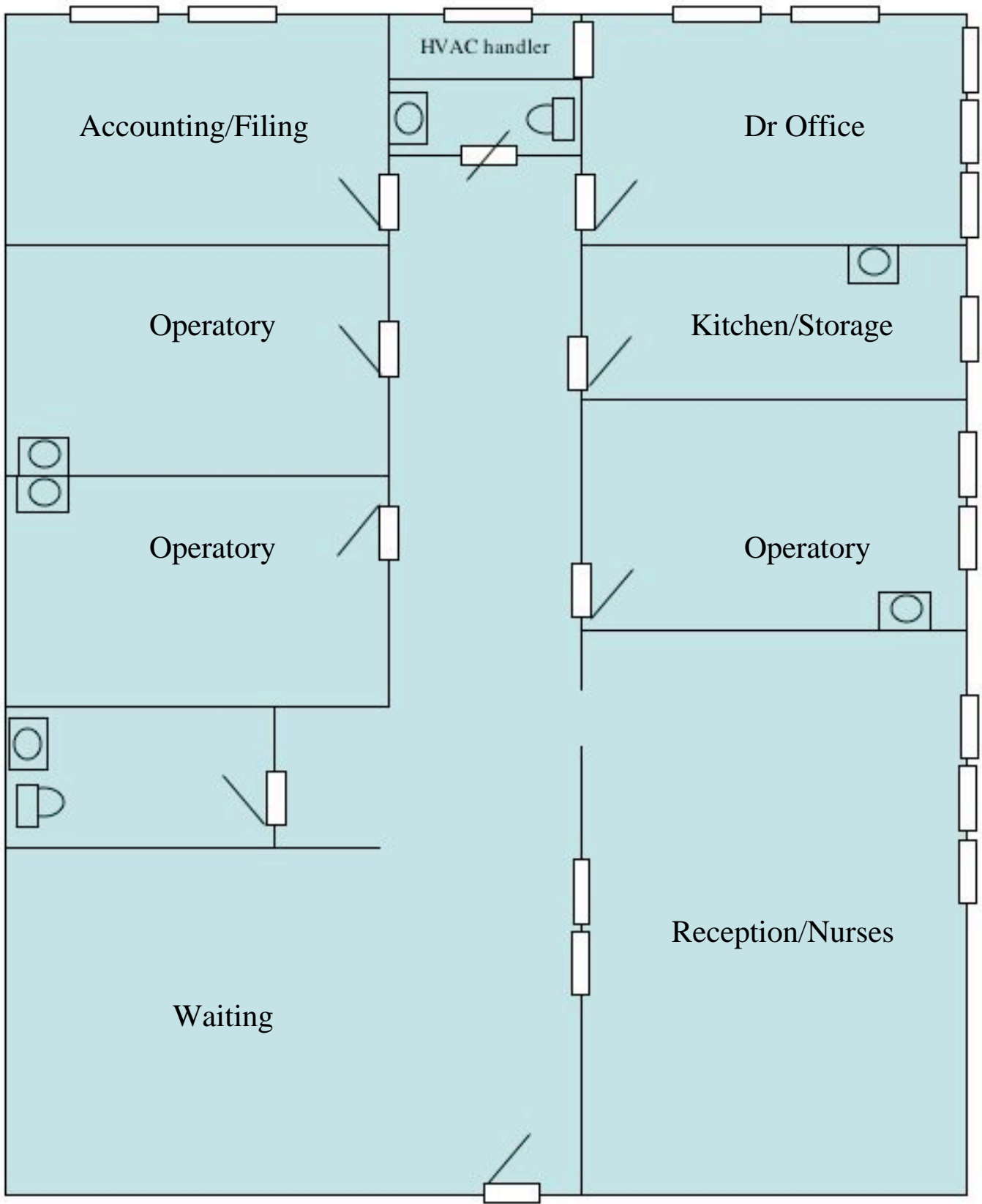
OPERATORY



OPERATORY



WAITING ROOM



Drawing is not to scale.

Door, Window & wall sizes/placements are approximate.