

Sub-Lease

OFFICE

1000 Uniqema Blvd., New Castle, Delaware 19720 Headquarters Office Building



Space Available

- ❖ +/- 60,000 Square Feet
- ❖ Four (4) Stories
- ❖ Class A Office Space
- ❖ Built in 2001

Parking

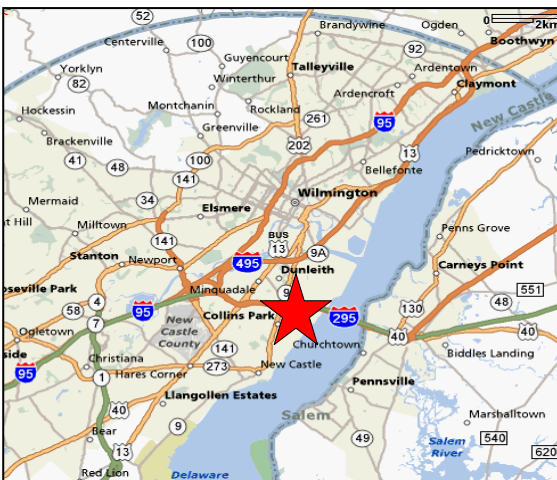
- ❖ Surface
- ❖ Covered

Occupancy

- ❖ Available Immediately

Sub-Lease Term

- ❖ Expires 3/31/2011



Additional Features

- ❖ Fiber Optic Cable Ready & CAT 5 Wiring
- ❖ Security System by Simplex Grinnell
- ❖ Training Center
- ❖ Cafeteria
- ❖ Conference Facilities
- ❖ Depressed Slab Data Center

Access & Exposure

- ❖ Exposure to 90,000 AADT (Daily Traffic)
- ❖ I-95, I-295, I-495, Rt. 13, Rt. 9, Rt. 40

Please contact:

Bart Mackey (302) 622-3515 **Dan Leshner (302) 622-3520**
bartmackey@pattersonwoods.com dlesher3@comcast.com

Patterson-Woods & Assoc., LLC

3801 Kennett Pike, D-100, Greenville, Delaware 19807

Main (302) 622-3500 Fax (302) 622-3535

www.pattersonwoods.com

CORFAC
International

**PATTERSON
WOODS**
COMMERCIAL PROPERTIES

In cooperation with:

THE GARIBALDI GROUP
CORFAC INTERNATIONAL
Global Real Estate Services

The above information is believed to be accurate, but prospective buyers or tenants must verify it to their own satisfaction. Price and availability are subject to change without prior notice. The seller's or landlord's broker, any cooperating broker and any salesperson working with either, are representing the seller or landlord interests, but are obligated to treat all parties fairly. Any variance in representation must be disclosed.

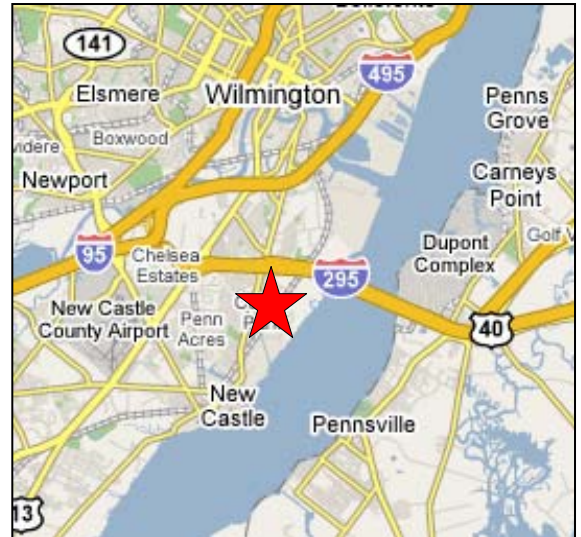
Sub-Lease

OFFICE

1000 Uniqema Blvd., New Castle, Delaware 19720 Headquarters Office Building



Interstate Access via:
I-95, I-295, I-495, Rt. 13, Rt. 9, Rt. 40



3 Story Atrium



Conference Center & Cafeteria



Please contact:

Bart Mackey (302) 622-3515 **Dan Leshner (302) 622-3520**
bartmackey@pattersonwoods.com dlesher3@comcast.com

Patterson-Woods & Assoc., LLC

3801 Kennett Pike, D-100, Greenville, Delaware 19807

Main (302) 622-3500 Fax (302) 622-3535

www.pattersonwoods.com

**PATTERSON
WOODS**
COMMERCIAL PROPERTIES

In cooperation with:

THE GARIBALDI GROUP
CORFAC INTERNATIONAL
Global Real Estate Services

CORFAC
International

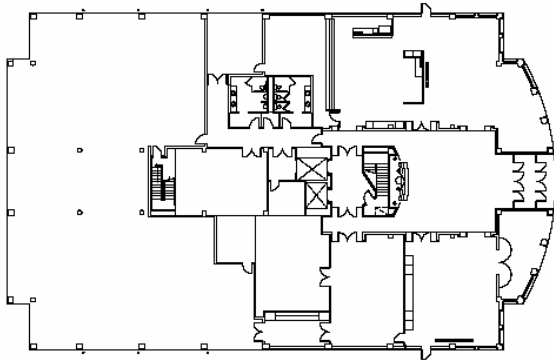
The above information is believed to be accurate, but prospective buyers or tenants must verify it to their own satisfaction. Price and availability are subject to change without prior notice. The seller's or landlord's broker, any cooperating broker and any salesperson working with either, are representing the seller or landlord interests, but are obligated to treat all parties fairly. Any variance in representation must be disclosed.

Sub-Lease

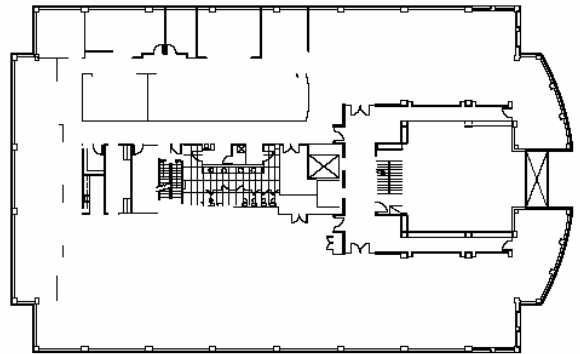
OFFICE

1000 Uniqema Blvd., New Castle, Delaware 19720
Headquarters Office Building

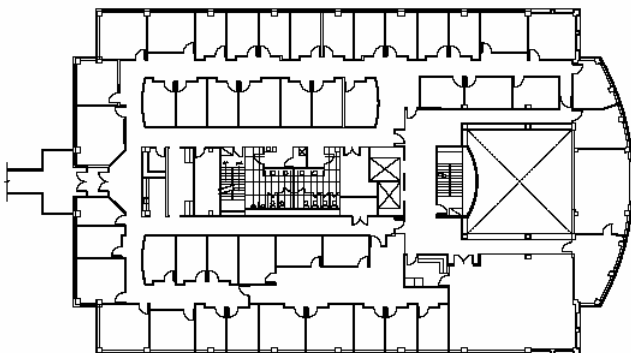
1st Floor



2nd Floor



3rd Floor



4th Floor



(The plans represented above are for marketing purposes only and are intended to be used for preliminary evaluation.)

Please contact:

Bart Mackey (302) 622-3515 **Dan Leshner (302) 622-3520**
bartmackey@pattersonwoods.com dlesher3@comcast.com

Patterson-Woods & Assoc., LLC

3801 Kennett Pike, D-100, Greenville, Delaware 19807

Main (302) 622-3500 Fax (302) 622-3535

www.pattersonwoods.com


**PATTERSON
WOODS**
COMMERCIAL PROPERTIES

In cooperation with:


THE GARIBALDI GROUP
CORFAC INTERNATIONAL
Global Real Estate Services


CORFAC
International

The above information is believed to be accurate, but prospective buyers or tenants must verify it to their own satisfaction. Price and availability are subject to change without prior notice. The seller's or landlord's broker, any cooperating broker and any salesperson working with either, are representing the seller or landlord interests, but are obligated to treat all parties fairly. Any variance in representation must be disclosed.